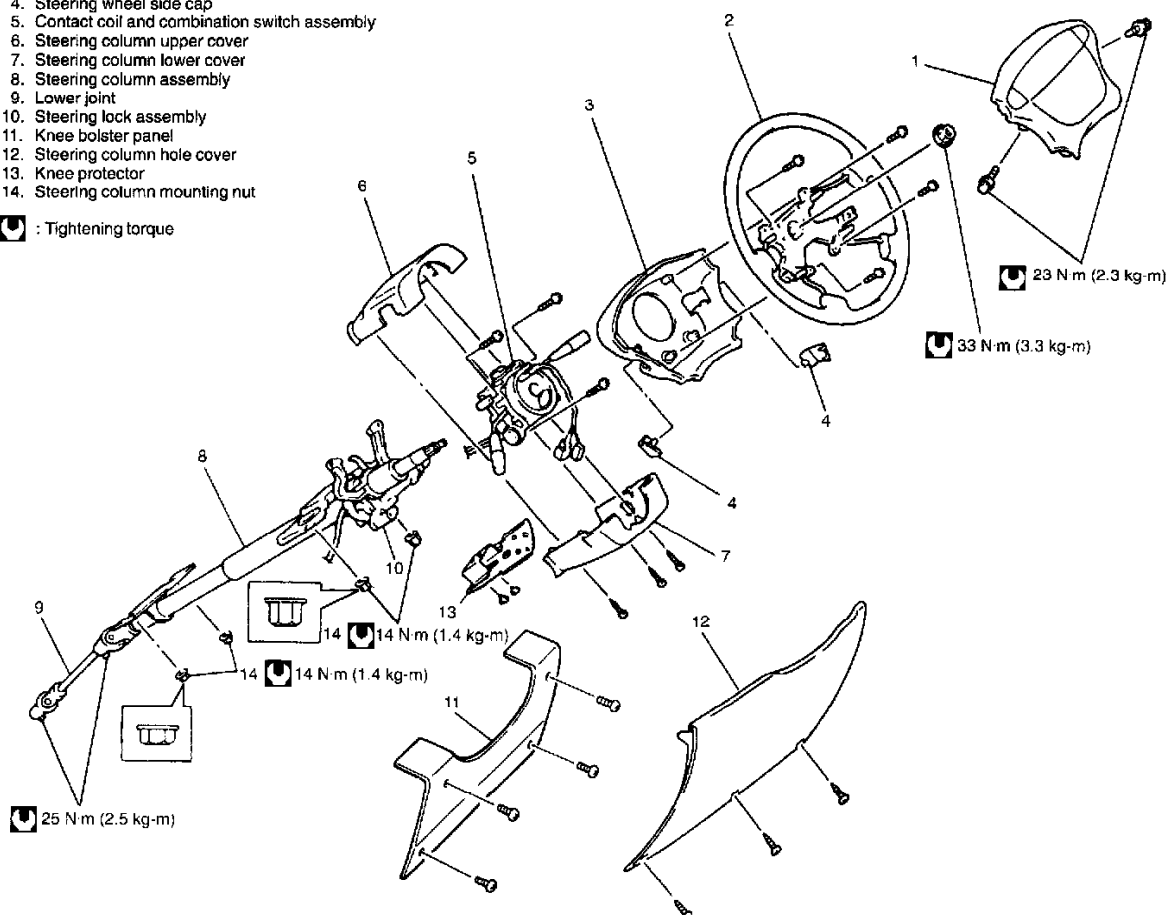


# Steering Column: Description and Operation

1. Air bag (inflator) module
2. Steering wheel
3. Steering wheel lower cover
4. Steering wheel side cap
5. Contact coil and combination switch assembly
6. Steering column upper cover
7. Steering column lower cover
8. Steering column assembly
9. Lower joint
10. Steering lock assembly
11. Knee bolster panel
12. Steering column hole cover
13. Knee protector
14. Steering column mounting nut

 : Tightening torque



## STEERING COLUMN

This double tube type steering column has following three important features in addition to the steering function:

- ^ The column is energy absorbing type, designed to contract in a front-end collision.
- ^ The ignition switch and lock are mounted conveniently on this column.
- ^ With the column mounted lock, the ignition and steering operations can be locked to inhibit theft of the vehicle.

When the column assembly is removed from the vehicle, special care must be taken in handling it.

## STEERING WHEEL AND DRIVER AIR BAG (INFLATOR) MODULE

The driver air bag (inflator) module is one of the supplemental inflatable restraint air bag system components and is mounted to the center of the steering wheel.

During certain frontal crashes, the air bag system supplements the restraint of the driver's and/or passenger's seat belts by deploying the air bag in each air bag (inflator) module.

The air bag (inflator) module should be handled with care to prevent accidental deployment.

When servicing, be sure to observe all WARNINGS and CAUTIONS.